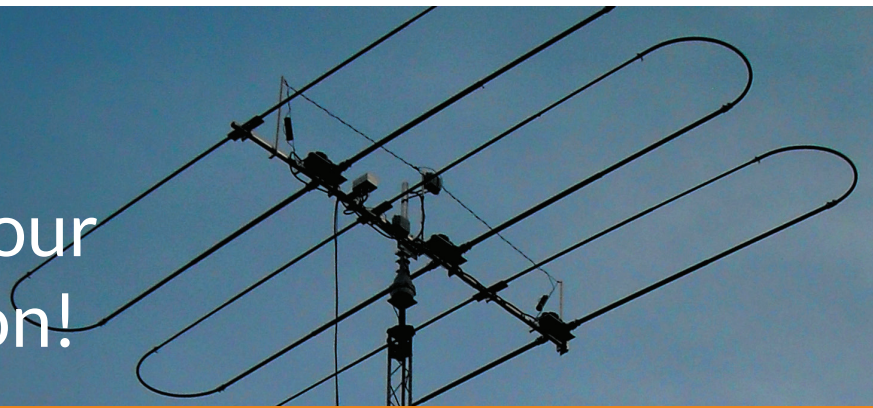


# Our most reliable product offering in our 21 years of operation!

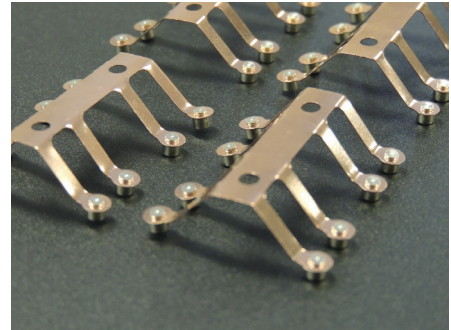


## CONSTANTLY INNOVATING OUR TECHNOLOGY

1

### NEW BRUSH/CONTACT ASSEMBLY

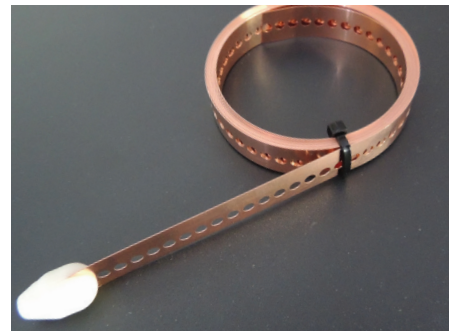
The new element housing unit (EHU) brush/contact assembly has greatly reduced friction buildup, with an average 36% friction reduction over the product life-cycle. The new assembly achieves this advantage without affecting product life expectations. The brush contact combination wears at a similar rate as our previous contacts. This new brush/contact not only has lower friction and the same longevity, it also greatly reduces RF noise during the tuning process due to the material properties of the contact.



2

### NEW COPPER STRIP INDEXING

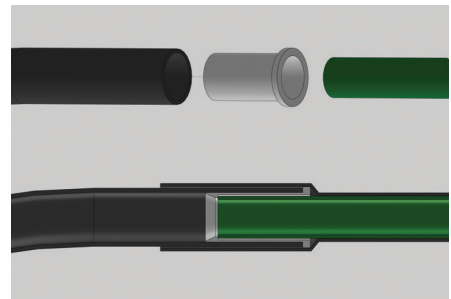
The engineering team at SteppIR has completely redesigned our copper strip indexing and crowning system – this has taken the better part of a year of extensive design and testing, along with a near total reconfiguration of the system. The resulting improvement in accuracy, pitch and repeatability is now producing the most consistent and reliable material we have ever had.



3

### NEW 40/30 SWEEP ASSEMBLY

We always make it a point to listen closely to our customer base – we consider them to be an extension of our engineering department and are very thankful to have this resource. Thanks to a great initial idea we heard about from a few of our customers, we were able to leverage that knowledge into an all-new sweep system for our 40/30 loops. The new system will make the installation of antennas with loops, significantly easier and much more reliable. And, our new diverter system for the sweep return, will ensure that the copper conductor has a clear path through the sweep material at all times.



steppIR  
**S9 PLUS 20**



FOR PRODUCT DETAILS AND ORDERING:  
[www.steppir.com](http://www.steppir.com) 425-453-1910

[www.s9plus20.com](http://www.s9plus20.com)